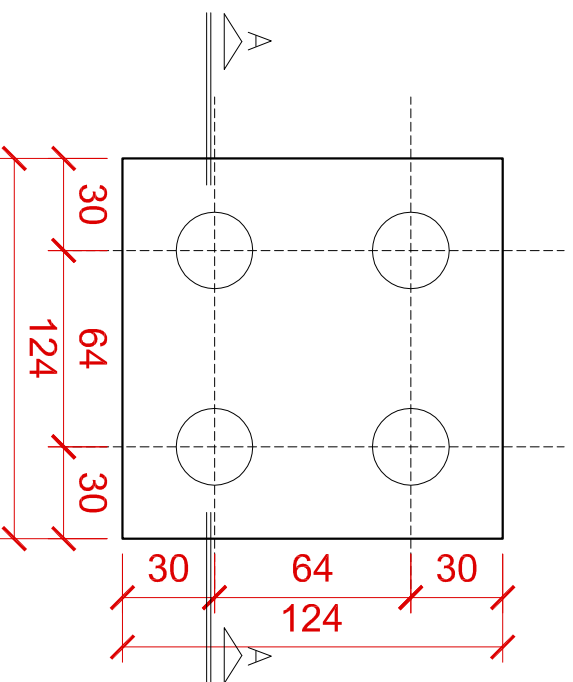
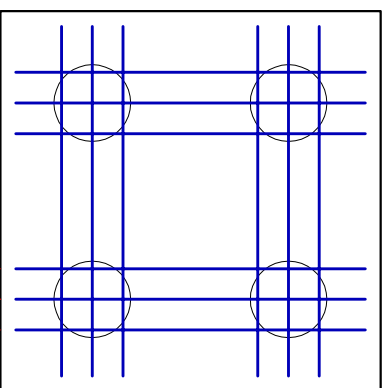


Planta baixa da base

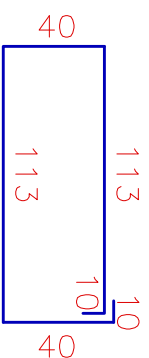


Planta baixa da armação da base

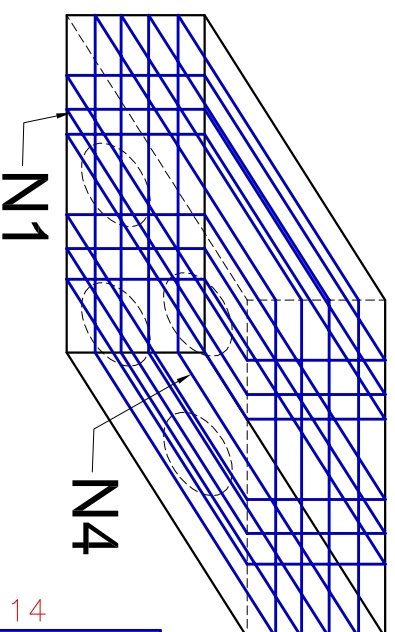


10 10

2x(2x3) N1 Ø10 C=326

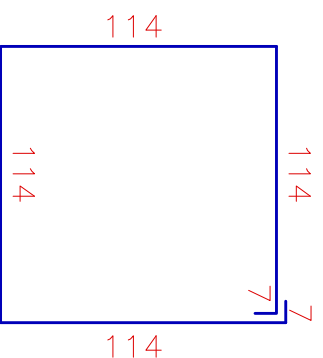


Vista em perspectiva da base



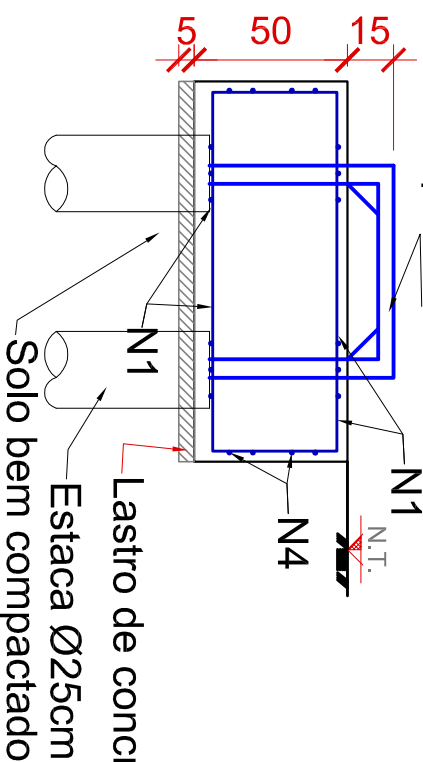
N1

N4



Corte A-A

Suporte metálico do reservatório.



4 N4 Ø6,3 C=470

SUGESTÃO PARA BASE EM CONCRETO ARMADO.  
RESERVATÓRIO TIPO TAÇA COLUNA SECA COM CAPACIDADE  
DE 5.500 LITROS.